

NexiusZoom(EVO) for gemology

HIGHLIGHTS

- Binocular and trinocular heads
- Standard HWF 10x eyepieces with 22 mm or 23 mm field of view
- Zoom objectives with 0.7 to 4.5x or 0.65 to 5.5x magnification
- Ergonomically designed backwards tilting stand
- 30 Watt halogen transmitted illumination
- 1W LED or 7W fluorescent incident illumination
- Configurations up to 220x magnification

TECHNICAL SPECIFICATIONS

EYEPIECES

The standard NexiusZoom is supplied with a pair of HWF 10x/22 mm eyepieces. The NexiusZoom Evo is supplied with a pair of HWF 10x/23 mm eyepieces

HEAD

Binocular or trinocular heads with 45° inclined tubes. Both eyepieces with ± 5 diopter adjustments. Interpupillary distance adjustable between 54 mm and 75 mm

OBJECTIVES

The standard NexiusZoom is supplied with a 1:6.7 zoom objective with 0.67x to 4.5x magnifications, a field of view from 33 mm to 4.9 mm. Working distance 110 mm. Standard magnification is 6.7 to 45x

The NexiusZoom Evo is supplied with a 1:8.4 zoom objective with 0.65x to 5.5x magnifications, a field of view from 35.4 mm to 4.2 mm. Working distance approx. 110 mm. Standard magnification is 6.5 to 55x

Auxiliary lenses 0.75x, 1.5x and 2.0x are available.

All optics are anti-fungus treated and anti-reflection coated for maximum light throughput

STAND

Ergonomically designed stand with backwards 0 to 45° tilting arm with 76 mm head holder, suitable for darkfield and brightfield. Built-in 100-240 V power supply

STAGE

Flat darkfield stage with clamp object holder, iris diaphragm and incident illumination



● NZ.1703-GEMF



● NZ.1902-GEML



● NZ.1903-GEMF



● NZ.1702-GEMF

ILLUMINATION

30 Watt halogen transmitted illumination. 1 Watt LED with adjustable intensity, or 7 Watt fluorescent incident illumination, intensity not adjustable. Both illuminators can be used simultaneously

PACKAGE CONTENT

Supplied with power cord, clamp object holder, dust cover, a spare fuse and user manual. All packed in a polystyrene box

| MODELS | Binocular | Trinocular | Objective 0.67-4.5 | Objective 0.65-5.5 | 1 W LED incident illumination | 7 W fluorescent incident illumination | 30 W halogen transmitted illumination | Working distance (mm) |
|--------------|-----------|------------|--------------------|--------------------|-------------------------------|---------------------------------------|---------------------------------------|-----------------------|
| NZ.1902-GEML | • | | • | | • | | • | 110 |
| NZ.1902-GEMF | • | | • | | | • | • | 110 |
| NZ.1702-GEML | • | | | • | • | | • | 110 |
| NZ.1702-GEMF | • | | | • | | • | • | 110 |
| NZ.1903-GEML | | • | • | | • | | • | 110 |
| NZ.1903-GEMF | | • | • | | | • | • | 110 |
| NZ.1703-GEML | | • | | • | • | | • | 110 |
| NZ.1703-GEMF | | • | | • | | • | • | 110 |

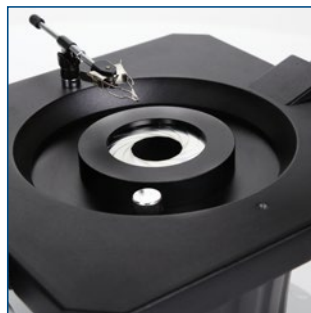
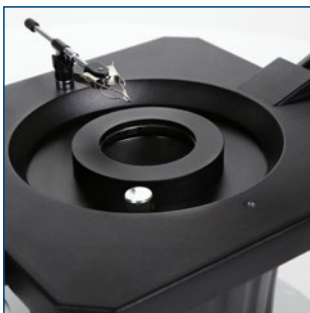
MAGNIFICATIONS

NexusZoom Working distance and field of view with standard HWF 10x / 22 High Wide Field eyepieces

| Zoom indication | Objective 1x (standard) Working distance 110 mm | | Auxiliary lens 0.75x Working distance 120 mm | | Auxiliary lens 1.5x Working distance 53 mm | | Auxiliary lens 2x Working distance 30 mm | |
|-----------------|----------------------------------------------------|---------------------|-------------------------------------------------|---------------------|-----------------------------------------------|---------------------|---------------------------------------------|---------------------|
| | Total Magnifications | Field of view in mm | Total Magnifications | Field of view in mm | Total Magnifications | Field of view in mm | Total Magnifications | Field of view in mm |
| 0.67 | 6.7 | 32.8 | 5.0 | 43.8 | 10.1 | 21.9 | 13.4 | 16.4 |
| 0.7 | 7.0 | 31.4 | 5.3 | 41.9 | 10.5 | 21.0 | 14.0 | 15.7 |
| 0.8 | 8.0 | 27.5 | 6.0 | 36.7 | 12.0 | 18.3 | 16.0 | 13.8 |
| 1.0 | 10.0 | 22.0 | 7.5 | 29.3 | 15.0 | 14.7 | 20.0 | 11.0 |
| 1.5 | 15.0 | 14.7 | 11.3 | 19.6 | 22.5 | 9.8 | 30.0 | 7.3 |
| 2.0 | 20.0 | 11.0 | 15.0 | 14.7 | 30.0 | 7.3 | 40.0 | 5.5 |
| 3.0 | 30.0 | 7.3 | 22.5 | 9.8 | 45.0 | 4.9 | 60.0 | 3.7 |
| 4.0 | 40.0 | 5.5 | 30.0 | 7.3 | 60.0 | 3.7 | 80.0 | 2.8 |
| 4.5 | 45.0 | 4.9 | 33.8 | 6.5 | 67.5 | 3.3 | 90.0 | 2.4 |

NexusZoom Evo Working distance and field of view with standard HWF 10x / 23 High Wide Field eyepieces

| Zoom indication | Objective 1x (standard) Working distance 110 mm | | Auxiliary lens 0.75x Working distance 120 mm | | Auxiliary lens 1.5x Working distance 53 mm | | Auxiliary lens 2x Working distance 30 mm | |
|-----------------|----------------------------------------------------|---------------------|-------------------------------------------------|---------------------|-----------------------------------------------|---------------------|---------------------------------------------|---------------------|
| | Total Magnifications | Field of view in mm | Total Magnifications | Field of view in mm | Total Magnifications | Field of view in mm | Total Magnifications | Field of view in mm |
| 0.65 | 6.5 | 35.4 | 4.9 | 47.2 | 9.8 | 23.6 | 13.0 | 17.7 |
| 0.7 | 7.0 | 32.9 | 5.3 | 43.4 | 10.5 | 21.9 | 14.0 | 16.4 |
| 0.8 | 8.0 | 28.8 | 6.0 | 38.3 | 12.0 | 19.2 | 16.0 | 14.4 |
| 1.0 | 10.0 | 23.0 | 7.5 | 30.7 | 15.0 | 15.3 | 20.0 | 11.5 |
| 1.5 | 15.0 | 15.3 | 11.3 | 20.4 | 22.5 | 10.2 | 30.0 | 7.7 |
| 2.0 | 20.0 | 11.5 | 15.0 | 15.3 | 30.0 | 7.7 | 40.0 | 5.8 |
| 3.0 | 30.0 | 7.7 | 22.5 | 10.2 | 45.0 | 5.1 | 60.0 | 3.8 |
| 4.0 | 40.0 | 5.8 | 30.0 | 7.7 | 60.0 | 3.8 | 80.0 | 2.9 |
| 4.5 | 45.0 | 5.1 | 33.8 | 6.8 | 67.5 | 3.4 | 90.0 | 2.6 |
| 5.5 | 55.0 | 4.2 | 41.3 | 5.6 | 82.5 | 2.8 | 110 | 2.1 |



ACCESSORIES AND SPARE PARTS

- NZ.5302** NexiusZoom binocular head with eyepieces
NZ.5303 NexiusZoom trinocular head with eyepieces
NZ.5312 NexiusZoom EVO binocular head with eyepieces
NZ.5313 NexiusZoom EVO trinocular head with eyepieces
- NZ.6010** Pair of HWF 10x / 22 mm eyepieces
NZ.6210 Pair of HWF 10x / 23 mm eyepieces
 (only suitable for NexiusZoom EVO)
NZ.6015 Pair of HWF 15x / 16 mm eyepieces
NZ.6020 Pair of HWF 20x / 12 mm eyepieces
NZ.6110 HWF 10x / 22 mm eyepiece with micrometer
NZ.6099 Pair of eyecups
- NZ.8907** Auxiliary lens 0.75x. Working distance 120 mm
NZ.8915 Auxiliary lens 1.5x. Working distance 53 mm
NZ.8920 Auxiliary lens 2.0x. Working distance 30 mm.
 Not suitable for NZ.1902-S and NZ.1903-S
NZ.8950 Protection glass for NexiusZoom head.
 Not suitable with auxiliary lenses
- NZ.9525** 360° rotatable analyzer in mount
 to be screwed under head of NexiusZoom
- NZ.9572-G** Adjustable GEM object clamp for
 NexiusZoom with tilting stand for gemology
- NZ.9833** C-mount adapter with 0.33x lens for 1/3" cameras. Suitable for
 trinocular models
- NZ.9850** C-mount adapter with 0.5x lens for 1/2" cameras.
 Suitable for trinocular models
- AE.5130** Universal SLR camera adapter with 2x projection lens for 23.2 mm
 tubes. Needs T2 adapter
- AE.5025** T2 adapter for Nikon D digital SLR cameras
AE.5040 T2 adapter for Canon EOS digital SLR cameras
Other T2 adapters on request
- AE.1112** Object micrometer 50 mm (divided in 500 parts on glass slide
 76 x 26 mm)



● **NZ.1902-GEML**