

BEFORE YOU CAN FIX IT,  
YOU NEED TO **FIND IT.**

## Reveal™

### POWERFUL THERMAL IMAGING CAMERA AND 300 LUMEN LED LIGHT

Durable, all-in-one thermal imager, with a wide 36-degree field of view, making it the perfect tool to easily, accurately, and safely inspect any job site.



206 x 156  
Thermal  
Sensor



36°  
Field of  
View



-40° F to 626° F  
Detection  
Range



500 ft  
Distance

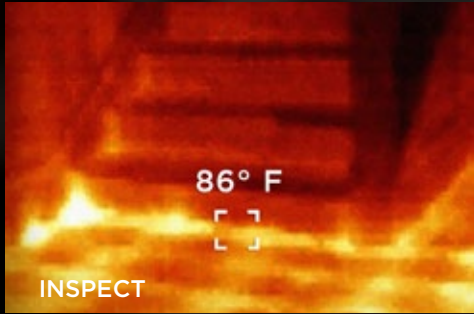


Works  
Day & Night



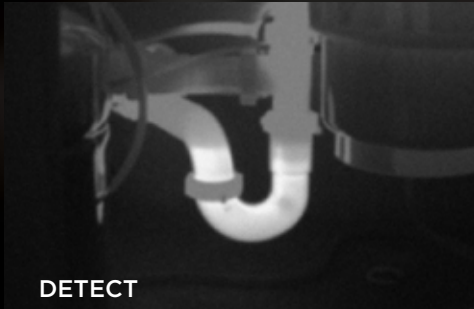
Seek™  
thermal

[thermal.com](http://thermal.com)



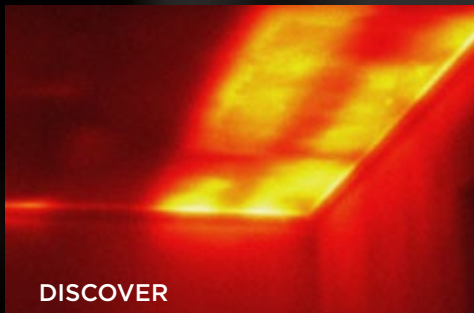
## PERFORMANCE FOCUSED

- 206 x 156 Thermal Sensor for accurate detection and measurement
- Powerful 300 Lumen Light for use in tight spaces
- Lasts up to 10 hours in continuous thermal imaging mode
- State-of-the-art technology, tough enough for the toolbox



## INFRARED THERMAL TECHNOLOGY THAT'S EASY TO USE

- Quick startup provides instant detection
- Intuitive, single-handed interface
- Library of color palettes to customize the built-in display
- Micro SD card for photo capture and USB transfer



## SEEK A NEW ADVANTAGE

- Accurate inspection for electrical, mechanical, and building applications
- Safely examine any job site in light or total darkness
- Rugged, rubberized casing, and intuitive controls go to work where you do



Reveal™

## SPECIFICATIONS

## DESCRIPTION

DETECTOR & OPTICS	
Thermal Sensor	206 x 156
Detection Distance	500 feet (165 yards, 150 meters)
Field of View	36 Degree FOV
Temperature Range	-40F to 626F (-40C to 330C)
Frame Rate	< 9 Hz
Focus	Fixed Focus
Lens Material	Chalcogenide
Microbolometer	Vanadium Oxide
Pixel Pitch	12 Microns
Spectral Range	7.5 - 14 Microns
SYSTEM SPECS	
Flashlight	300 Lumen LED (programmable brightness)
Display Resolution	2.4" Color, 240 x 320
Temp. Display Scale	Fahrenheit or Celsius
Color Palettes	7 Options
Startup Time	< 3 seconds
User Interface	Self-contained device with 3 button navigation
Storage Media	MicroSD Card Included
Battery	3.7V Rechargeable lithium
Battery Life (operating)	Up to 10 hours continuous thermal
DEVICE & PACKAGE INFO	
Country of Origin	Designed and manufactured in Santa Barbara, California, USA with global components
Color	Blue
Device Dimensions (H x W x D)	5 x 2.4 x 1.2 inches
Device Weight	6.25 ounces
Box Dimensions (H x W x D)	6.25 x 3.75 x 3.25 inches
Package Weight	18.5 ounces
Included in the box	Seek Reveal, Welcome Guide, Wrist Lanyard, MicroSD Card, and USB Cable

For support and user guides visit [support.thermal.com](http://support.thermal.com)

Seek™  
thermal

[thermal.com](http://thermal.com)